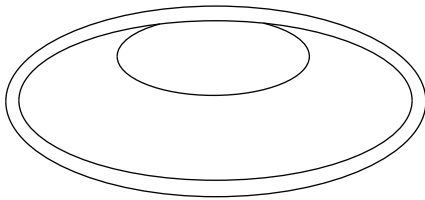


**Titan Trimless  
Standard**

**DOXIS**  
LIGHTING FACTORY



**Instructions:**

1. Drill a hole in the ceiling
2. Place housing in ceiling by positioning it sideways
3. Fix housing by screwing screws into ceiling
4. Adjust housing height using screws on inside  
Any edge sticking out must be same level as plaster surface
5. Finish ceiling using plaster and paint
6. Connect LED cassette to driver
7. Connect 230V to driver
8. Insert driver and cassette into ceiling

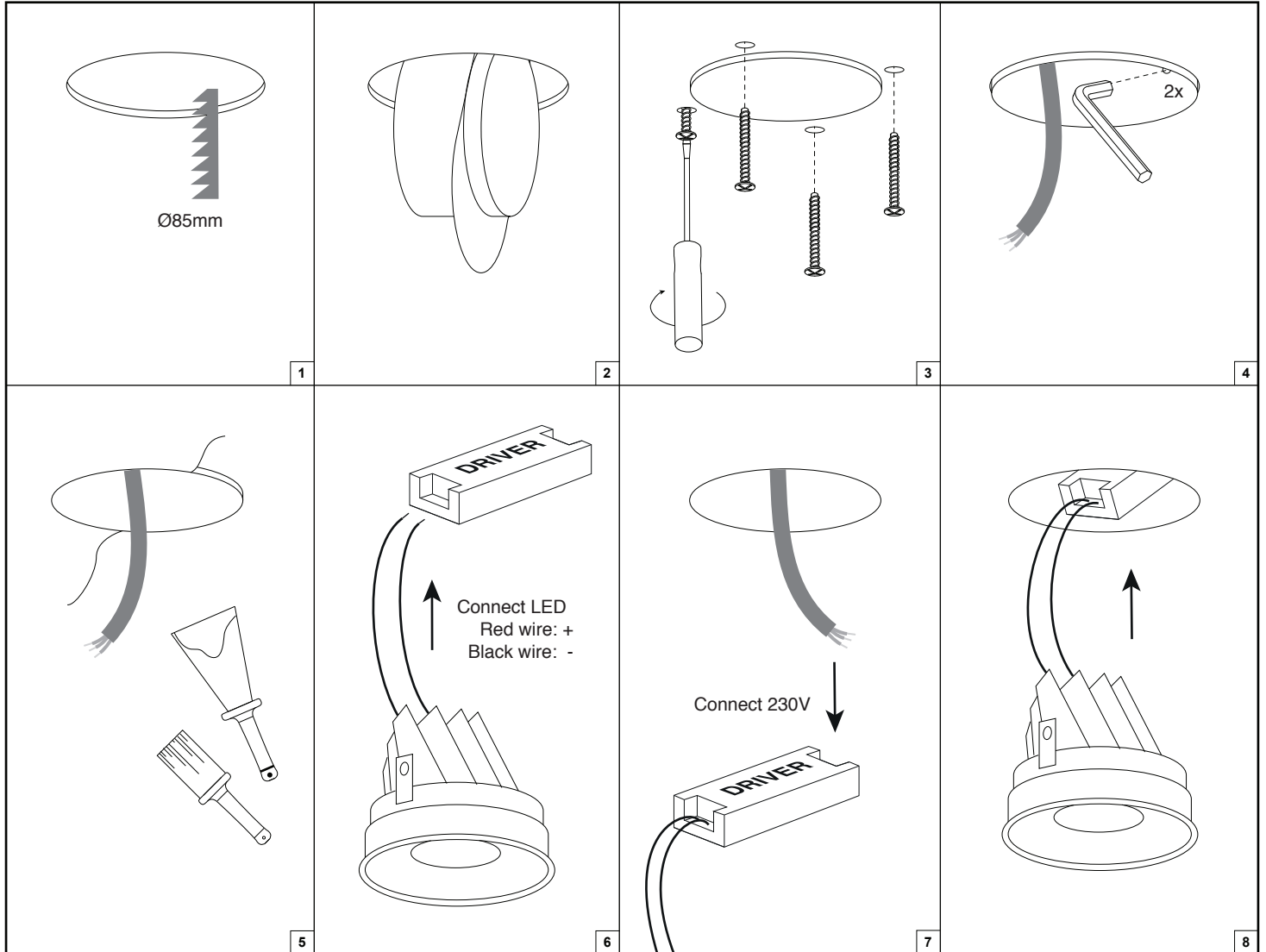
Forward voltages and nominal drive currents are mentioned on the label supplied with the product or can be found in the technical datasheet of the product.

**Always use the correct driver.**

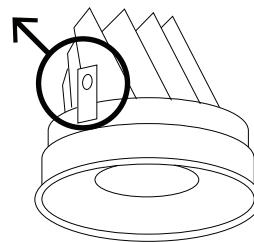
**Always install the driver according to the wiring schematics supplied with the driver.**

**Always check if multi-current drivers are set to the correct output current.**

**Doxis Lighting Factory cannot be held responsible for damage caused by using the wrong driver.**



If cassette doesn't hold well inside trimless housing,  
clips can be bent outward a little bit.



**⚠ Attention!!**

Always follow the instructions described in this document and store this document for future reference.

Do not touch LED surface. Warranty void if LED contact has taken place.  
Only to be installed by a qualified electrician.

Always make sure power is completely switched off when working on luminaire.

**Doxis Lighting Factory NV cannot be held responsible for any damage caused by incorrect installation, modification, reparation or incorrect application/usage of the product.**

**Air circulation notice:**

Do not topload with insulation materials

